

NATALIE

4 BED, 2.5 BATH, 2 CAR GARAGE
1,841 sq. ft.



ELEVATION A

pitellhomes.com

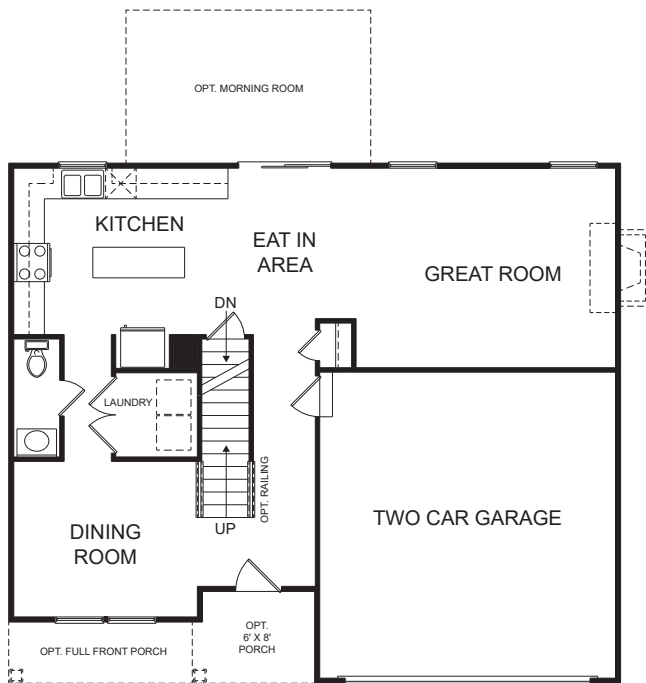
**pitell**
HOMES

In the continuing effort to improve our homes, builder reserves the right to modify the interior and exterior design, specifications, locations, sizes, design features and prices of the homes. Modifications may vary by home and are subject to change without notice. All dimensions and square footages are approximate and can vary in production. No representations of any type are made by this floor plan. Colors shown are approximate representations of actual materials and are not intended to be an exact color match. Please consult our sales representative for details.

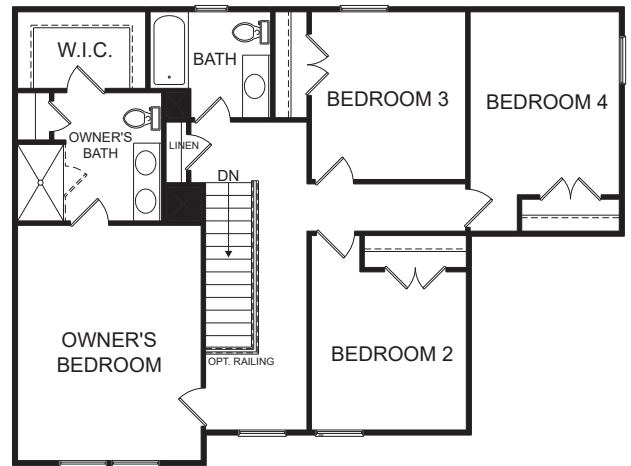


NATALIE

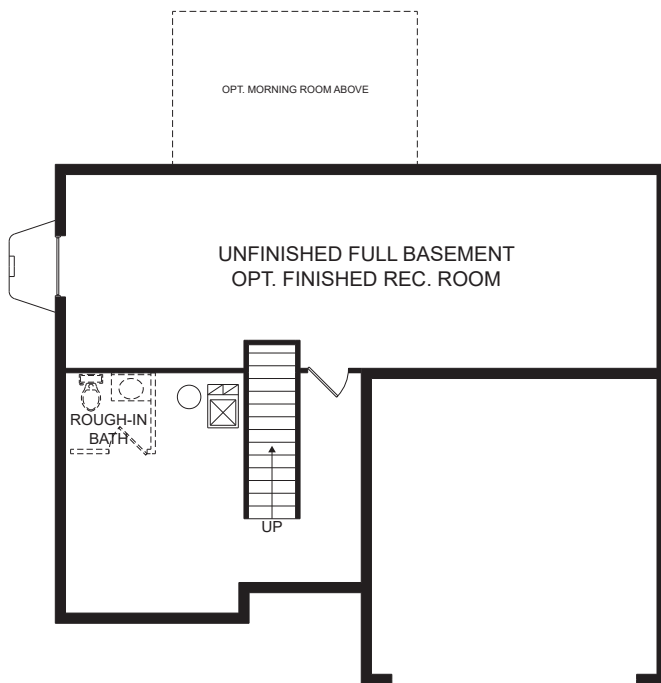
4 BED, 2.5 BATH, 2 CAR GARAGE
1,841 sq. ft.



FIRST FLOOR



SECOND FLOOR



BASEMENT

pitellhomes.com



In the continuing effort to improve our homes, builder reserves the right to modify the interior and exterior design, specifications, locations, sizes, design features and prices of the homes. Modifications may vary by home and are subject to change without notice. All dimensions and square footages are approximate and can vary in production. No representations of any type are made by this floor plan. Colors shown are approximate representations of actual materials and are not intended to be an exact color match. Please consult our sales representative for details.

